



Connector
World

TAJIMI CONNECTORS



CIRCULAR CONNECTORS

Connector World

15 Chandler St

Parkdale VIC 3195

03 9580 6680

sales@connectorworld.com.au

www.connectorworld.com.au

Water Proof Circular Connectors

1108 series

- 1108 series connectors are built compact and the tight waterproofing mechanism allows the model to be at a depth of 30 meter. This model is also ideal for application where units are exposed to extreme weather or high humidity either inside or outside.
- Also available in a hermetically sealed receptacle.

Specifications

Connections	Screw Coupling
Termination	Solder
Temperature and Humidity	-25°C to +85°C 85% Max.
Number of Pins	2, 3, 4, 5, 7, 8, 12, 14, 19, 21, 37
Shell Material / Finish	Brass / Nickel
Contact Material / Finish	Copper Alloy / Gold over Nickel
Water Proof (Connected State)	300kPa (3kgf/cm ²)
Hermetic Seal (Hermetically sealed recep. only)	Helium leak rate 1 ATM. 1x10 ⁻⁹ cc/sec Max.

* See next page as for Electrical Specifications.



Plug / Normal Clamp Type
1108-12A10-7M()



Plug / Double Clamp Type
1108-12B10-7M()



Jack / Normal Clamp Type
1108-32A10-7M()



Plug / Normal Clamp with Long Body Type
1108-15A10-7M()



Bulkhead Mount Receptacle
1108-23A10-7F



Flange Mount Receptacle
1108-21B10-7F



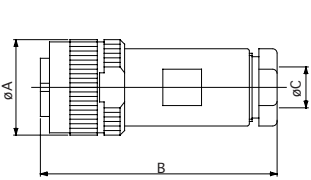
Hermetically Sealed Receptacle
1108-71B10-7M



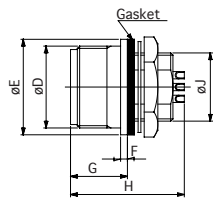
Back Mount Receptacle
1108-29B10-7M-1



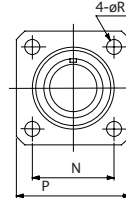
Caps for Plug and Receptacle
1108-10PC1, 1108-10RC



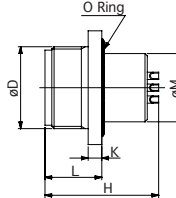
Plug / Normal Clamp Type



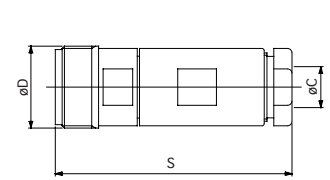
Bulkhead Mount Receptacle



Flange Mount Receptacle



Jack



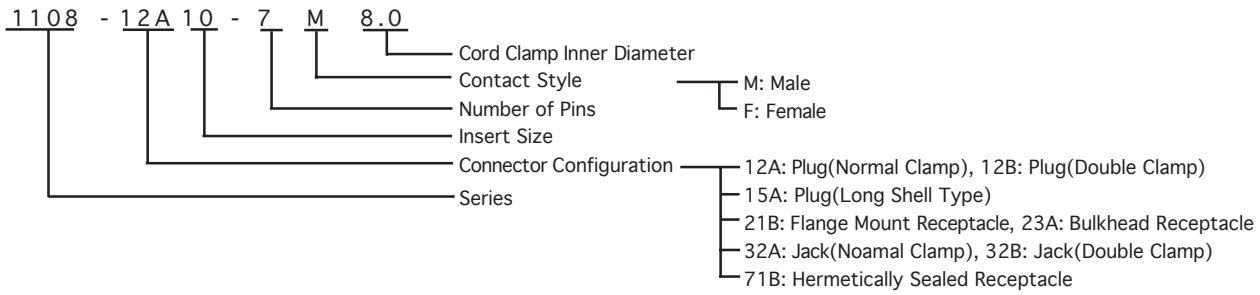
Configuration

Insert size	No. of Pins	Dimensions (mm)																
		A	B	C		D	E	F	G	H	J	K	L	M	N	P	R	S
10	2, 3, 4 5, 7	21.0	52.0	5.0, 6.3, 7.0, 8.0	8.6, 9.3, 10.0, 10.5	M18 P=1	21.0	1.5	12.5	26.0	M15 P=1	3.0	12.5	15.0	18.0	25.0	3.2	52.0
16	8, 14	27.0	55.5	11.1, 11.8, 13.5		M24 P=1	27.0	1.5	12.5	26.0	21.0 P=1	3.0	12.5	21.0	23.0	30.0	3.2	56.0
20	12, 19	34.0	61.0	11.0, 14.3, 15.8		M30 P=1	33.0	2.0	13.5	26.0	26.0 P=1	3.0	12.5	26.0	31.0	38.0	3.2	61.0
26	21, 37	40.0	65.0	16.3		36.0 P=1	39.0	2.5	13.5	26.0	32.0 P=1	3.0	12.5	32.0	35.0	43.0	3.2	65.5

Water Proof Circular Connectors Specifications

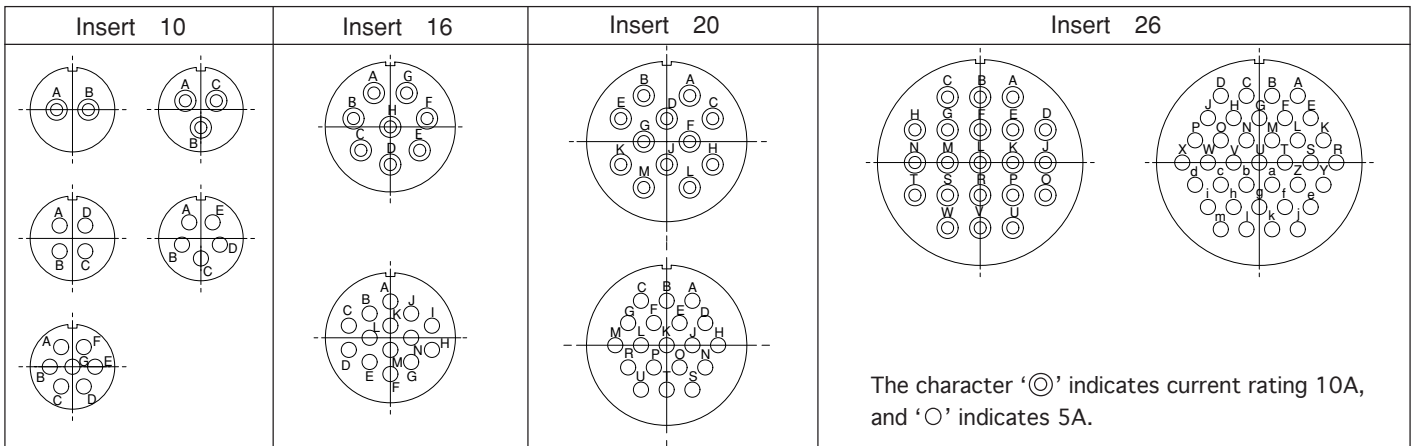
1108 series

Part Numbering System



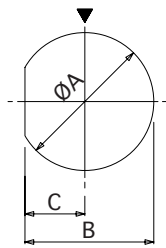
Insert Size	10				16		20		26		
Number of Contacts	2	3	4	5	7	8	14	12	19	21	37
Withstanding Voltage (V RMS)	1800	1000	1200	1000	900~1000	1200	1000	1200	1200	1200	1200
Voltage Rating (V RMS)	600	350	400	350	300~350	400	350	400	400	400	400
Current Rating (A)	10	10	5	5	5	10	5	10	4	10	3
Applicable Wire Size	16	16	20	20	20	16	20	16	20	16	20
Contact Resistance	5mΩ Max.										
Insulation Resistance	DC500V 1000MΩ~2000MΩ min.										

Insert Size & Pin Arrangement

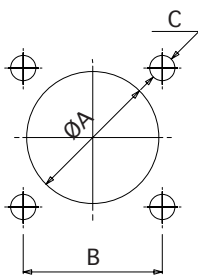


* Drawings above are ones viewed from the rear side of pin insulators. (pin contacts)

Mounting Hole Dimensions



Style 1



Style 2

Bulkhead Mount Receptacle

Insert Size	Style	φ A	B	C
10	1	15.2	14.2	6.6
16		21.2	20.2	9.6
20		26.2	25.2	12.1
26		32.2	31.2	15.1

Frange Mount Receptacle

Insert Size	Style	φ A	B	C
10	2	15.2	18.0	M3
16		21.2	23.0	M3
20		26.2	31.0	M3
26		32.2	35.0	M3

Hermetically Sealed Receptacle

Insert Size	Style	φ A	B	C
10	2	14.8	18.0	M3
16		21.8	25.0	M3

Water Proof Circular Connectors

R04 series / R28 series

- R04 series connectors are built compact and the tight waterproofing mechanism allows the model to be at a depth of 20 meters . This model is ideal for application where units are exposed to extreme weather or high humidity either inside or outside.

Also available in a hermetically sealed receptacle.

R28 series based on R04 series feature high density and miniaturization.

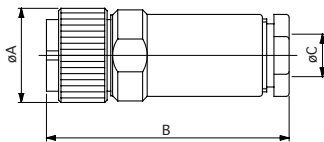
Specifications

Series	R04	R28
Connections	Screw Coupling	
Termination	Solder	
Temperature and Humidity	-25°C to +85°C 85% Max.	
Number of Pins	2, 3, 5, 6, 8, 12	8, 12
Shell Material / Finish	Brass and Zinc Alloy / Nickel	
Contact Material / Finish	Copper Alloy / Gold over Nickel	
Insulation Material	PBT Resin (UL 94 V-0)	
Water Proof (connected state)	200kPa (2kgf/cm ²)	
Hermetic Seal (Hermetically sealed recep. only)	Helium leak rate 1 ATM. 1x10 ⁻⁹ cc/sec max.	-----

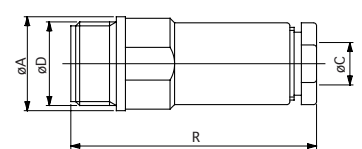
* See next page as for Electrical Specifications.



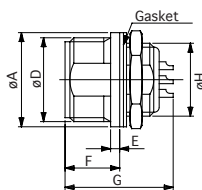
Plug
R04-P8M



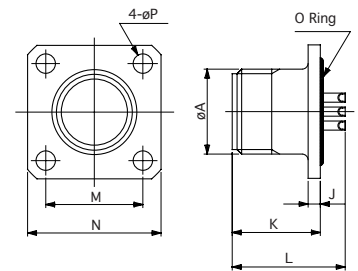
Jack
R04-J8F6.3



Bulkhead Mount Receptacle
R04-R8F



Hermetically Sealed Recep.
R04-R2MHB
(Only R04series)



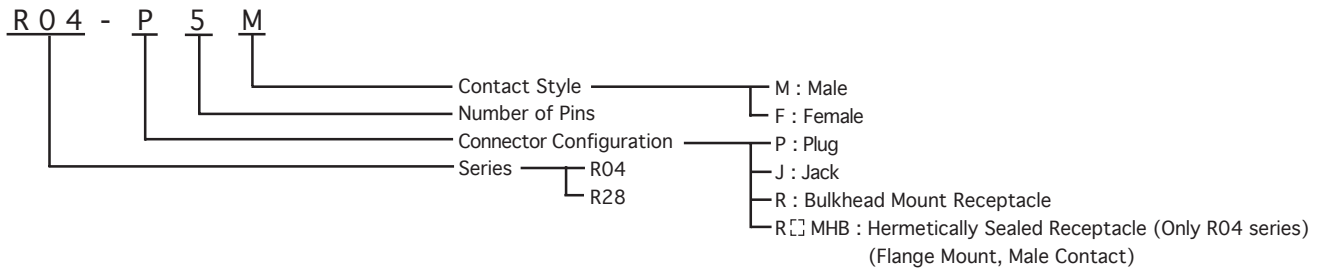
Configuration

Series	Insert size	No. of Pins	Dimensions (mm)														
			A	B	C	D	E	F	G	H	J	K	L	M	N	P	R
R04	6	2, 3, 5	12.0	38.0	4.8	10.5 P=0.75	1.5	9.0	17.8	9.0 P=0.5	2.0	14.5	18.6	14.0	20.0	3.2	38.0
	9	6, 8	15.5	40.0	6.3, 6.8, 7.3	M14 P=1	1.5	9.0	17.8	12.0 P=0.8	2.0	14.5	18.6	16.0	22.0	3.2	40.5
	12	12	20.0	43.3	6.3, 8.5	M18 P=1	1.5	9.0	17.8	M16 P=1	3.0	14.5	18.6	20.0	26.0	3.2	41.8
R28	6	8	12.0	38.0	4.8	10.5 P=0.75	1.5	9.0	17.8	9.0 P=0.5	---	---	---	---	---	---	---
	9	12	15.5	40.0	6.3, 6.8, 7.3	M14 P=1	1.5	9.0	17.8	12.0 P=0.8	---	---	---	---	---	---	---

Water Proof Circular Connectors

R04 series / R28 series

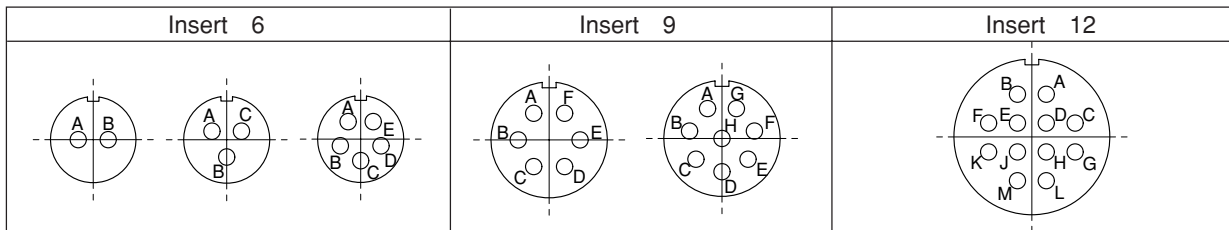
Part Numbering System



Electrical Specifications

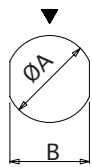
Series	R04						R28	
	6			9		12	6	9
Insert Size	6			9		12	6	9
Number of Contacts	2	3	5	6	8	12	8	12
Withstanding Voltage (V RMS)	900	900	500	900	700	900	300	300
Voltage Rating (V RMS)	300	300	150	300	200	300	100	100
Current Rating (A)	2							
Applicable Wire Size	AWG#24 (0.2mm ² Max.)						AWG#26 (0.1mm ² Max.)	
Contact Resistance	8mΩ Max.						15mΩ Max.	
Insulation Resistance	DC500V 1000MΩ min.						DC100V 1000MΩ min.	

Insert Arrangement



* Drawings above are ones viewed from the rear side of pin insulators. (pin contacts)

Mounting Hole Dimensions

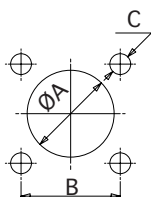


Style 1

Bulkhead Mount Receptacle

Insert Size	Style	φA	B
6	1	9.2	8.4
9		12.2	11.2
12		16.2	14.7

* R28 is not available in insert size 12.



Style 2

Hermetically Sealed Receptacle (Flange Mount, Only R04 series)

Insert Size	Style	φA	B	C
6	2	9.6	14.0	M3
9		12.4	16.0	M3
12		16.8	20.0	M3

Water Proof Circular Connectors

R14 series

- R14 series connectors are the tight waterproofing mechanism allows the model to be at a depth of 100 meters under water.

Housing parts are made of stainless steel that is ideal to use under water.



Plug
R14-P3F



Cap for Plug
R14-10PC



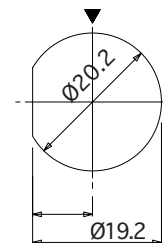
Bulkhead Mount Receptacle
R14-R3M



Cap for Receptacle
R14-10RC

Specifications

Connections	Screw Coupling	
Applicable Cable	Cable O.D. $\phi 9.5$ to $\phi 10.0$	
Insulation Resistance	DC500V 1000M Ω Min	
Contact Resistance	5m Ω Max.	
Water Proof	Connected State Only Receptacle	1000kPa (10kgf/cm ²) 500kPa (5kgf/cm ²)
Dimensions	Plug : O.D. $\phi 27.0$ mm / Length 68.5mm Receptacle : $\phi 28.0$ mm / Length 27.0mm	



Mounting Hole Dimensions

Models

No. of Pins	Plug	Receptacle	Voltage Rating	Current Rating	Withstanding Voltage
2	R14-P2F	R14-R2M	600V RMS	10A	1800V RMS
3	R14-P3F	R14-R3M	350V RMS	10A	1000V RMS
4	R14-P4F	R14-R4M	400V RMS	5A	1200V RMS
5	R14-P5F	R14-R5M	350V RMS	5A	1000V RMS
7	R14-P7F	R14-R7M	300V RMS	5A	900V RMS

Pin Arrangement

For Pin Arrangement, see Insert 10 on P19.

Push-Pull Circular Connectors

PRC03 series / PRC04 series

- PRC03 series Push-Pull Locking connectors are uniquely designed in applications and are popular in demand -ing measurement and industrial. PRC03 series connectors are registered as a standard model of Japanese Non-destructive Testing Association.
- PRC04 series are lightweight connectors, adopting aluminum alloy.

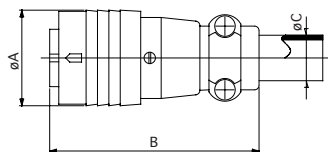
Specifications

Series	PRC03	PRC04
Connections	Push-Pull	
Termination	Solder	
Temperature and Humidity	-25°C to +85°C 85% Max.	
Number of Pins	2, 3, 4, 5, 7	8, 12, 14, 19, 21, 37
Shell Material / Finish	Zinc Alloy / Nickel	Aluminum Alloy / Anodic Oxidation
Contact Material / Finish	Copper Alloy / Gold over Nickel	

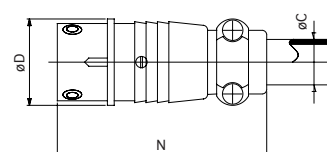
* See next page as for Electrical Specifications.



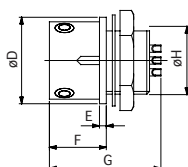
Plug
PRC03-12A10-3AM10.5



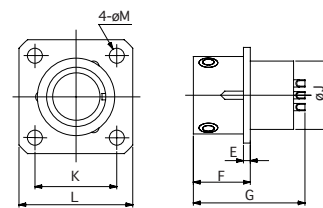
Jack
PRC03-32A10-AF



Bulkhead Mount Receptacle
PRC03-23A10-3AF



Flange Mount Receptacle
PRC03-21A10-3AF



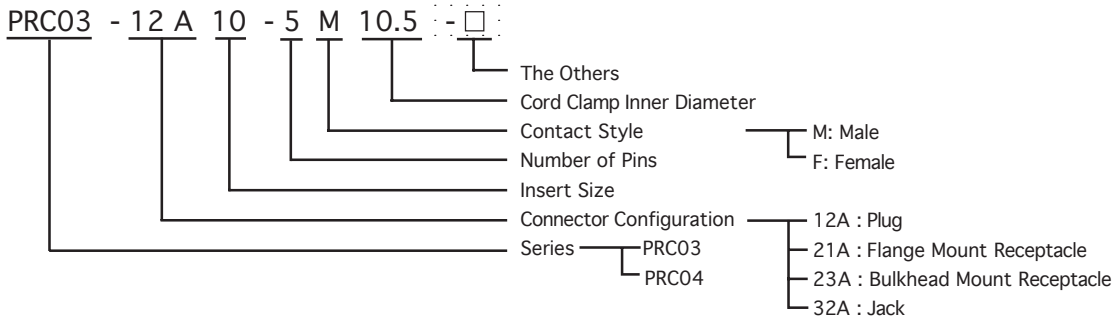
Configuration

Insert Size	Series	No. of Pins	Dimensions (mm)													
			A	B	C	D	E	F	G	H	J	K	L	M	N	
10	PRC03	2, 3, 4, 5, 7	21.0	46.0	10.5	19.0	1.5	12.5	26.5	M15 P=1	15.0	16.0	21.0	2.9	46.0	
16	PRC04	8, 14	28.0	55.5	12.5	25.0	2.0	13.5	25.5	21.0 P=1	21.0	21.5	28.0	3.4	50.0	
20		12, 19	34.0	63.5	14.5	32.0	2.5	14.0	26.0	26.0 P=1	26.0	26.0	33.0	3.9	58.5	
26		21, 37	41.0	71.0	18.0	38.0	2.5	14.0	26.0	32.0 P=1	32.0	31.0	38.0	3.9	65.5	

Push-Pull Circular Connectors Specifications

PRC03 series / PRC04 series

Part Numbering System

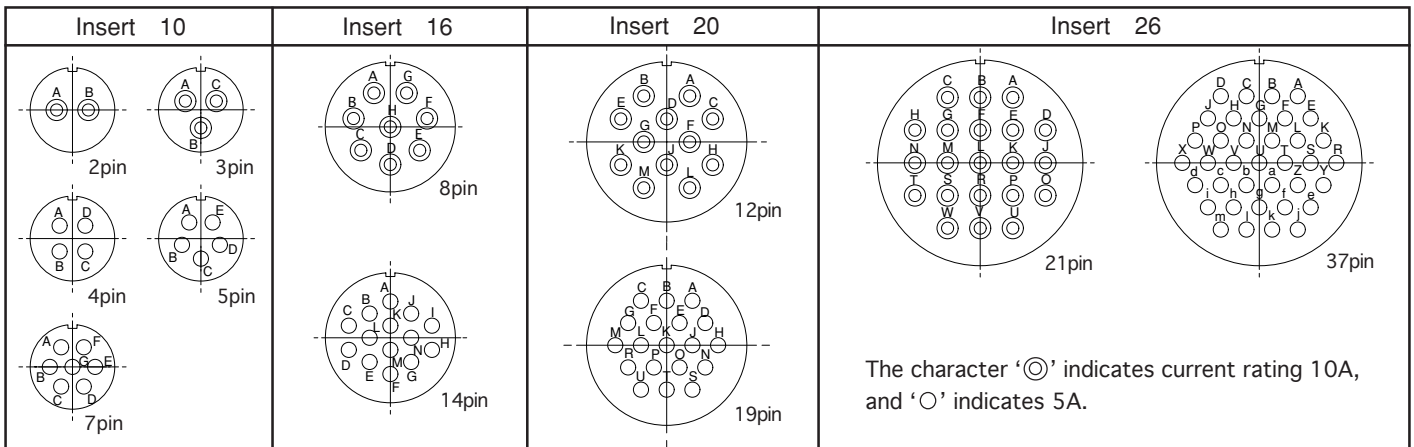


Electrical Specifications

Series	PRC03					PRC04					
	10					16		20		26	
Insert Size	10					16		20		26	
Number of Contacts	2	3	4	5	7	8	14	12	19	21	37
Withstanding Voltage (V RMS)	1800	1000	1200	1000	1000	1200	1000	1200	1200	1200	1200
Voltage Rating (V RMS)	600	350	400	350	350	400	350	400	400	400	400
Current Rating (A)	10	10	5	5	5	10	5	10	4	10	3
Applicable Wire Size	AWG#16 (1.4mm ² Max.)		AWG#20 (0.5mm ² Max.)			AWG- #16	AWG- #20	AWG- #16	AWG- #20	AWG- #16	AWG- #20
Contact Resistance	5mΩ Max.										
Insulation Resistance	DC500V 100MΩ min.										

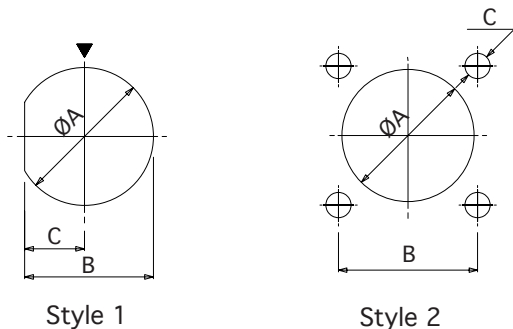
* PRC03 series is only available in Insert Size 10, PRC04 series is only available Insert Size 16, 20 and 26.

Insert Size & Pin Arrangement



* Drawings above are ones viewed from the rear side of pin insulators. (pin contacts)

Mounting Hole Dimensions



Bulkhead Mount Receptacle

Insert Size	Style	φ A	B	C
10 : PRC03	1	15.2	14.2	6.6
16 : PRC04		21.2	20.2	9.6
20 : PRC04		26.2	25.2	12.1
26 : PRC04		32.2	31.2	15.1

Flange Mount Receptacle

Insert Size	Style	φ A	B	C
10 : PRC03	2	15.2	16.0	φ 2.9
16 : PRC04		21.2	21.5	φ 3.4
20 : PRC04		26.2	26.0	φ 3.9
26 : PRC04		32.2	31.0	φ 3.9

Push-Pull Circular Connectors

PRC05 series / PRC07 series

- PRC05 series are smaller than the PRC03, PRC04 series, they are our original Push-Pull Locking connectors for quick and easy connection.
- PRC07 series based on PRC05 series feature high density and miniaturization.

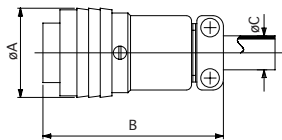
Specifications

Connections	Push-Pull Lock
Termination	Solder
Temperature and Humidity	-25°C to +85°C 85% Max.
Number of Pins	2, 3, 5, 6, 8, 12
Shell Material / Finish	Brass / Nickel
Contact Material / Finish	Copper Alloy / Gold over Nickel

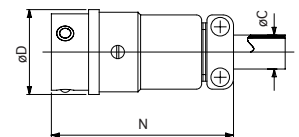
* See page 28 as for Electrical Specifications.



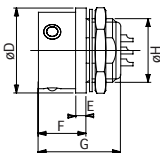
Plug
PRC05-PSF



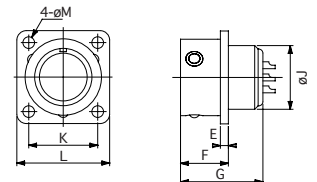
Jack
PRC05-J5M



Bulkhead Mount Receptacle
PRC05-R5M



Flange Mount Receptacle
PRC05-RB5M



Configuration

Insert Size	No. of Pins	Dimensions (mm)													
		A	B	C	D	E	F	G	H	J	K	L	M	N	
6	2, 3, 5	13.5	32.0	5.2	13.0	2.0	9.5	18.0	9.0 P=0.5	9.0	11.5	16.0	2.2	32.5	
9	6, 8	16.7	34.0	6.2	16.0	2.0	9.5	18.0	12.0 P=0.8	12.0	13.5	18.0	2.2	34.5	
12	12	21.0	39.0	11.0	20.0	2.0	9.5	18.0	M16 P=1.0	16.0	17.0	22.5	2.8	39.0	

Miniature Circular Connectors

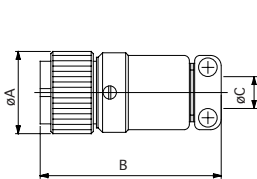
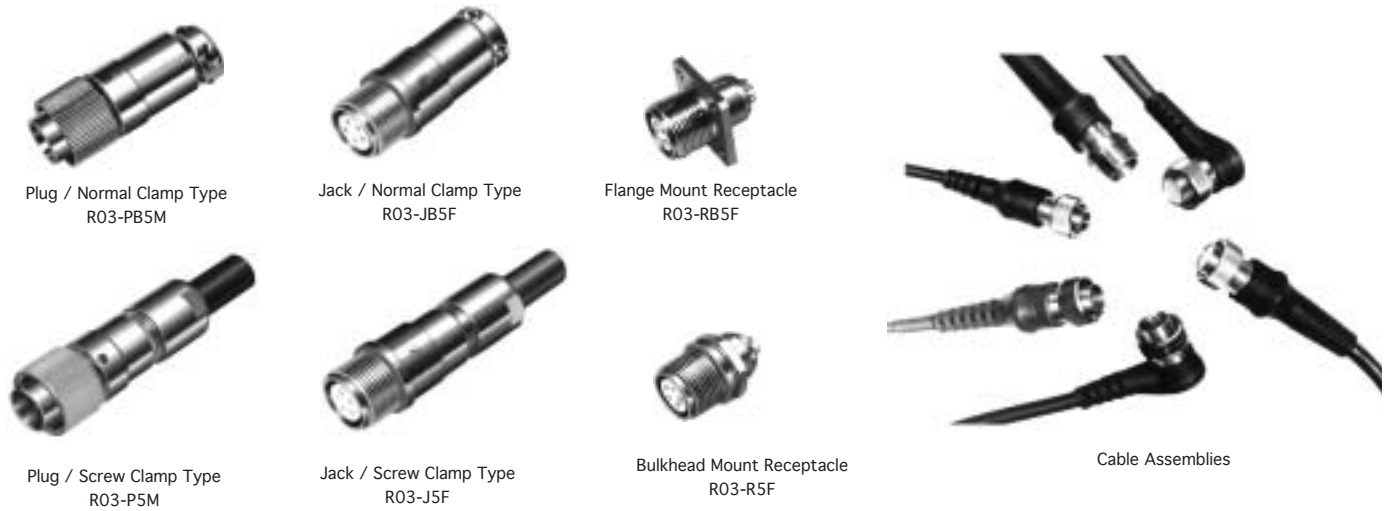
R03 series / R27 series

- R03 series are small circular connectors with threads on locking. They are subminiature in size and are suited for a variety of electronic equipment.
- A wide variety of molded cable assemblies are available for your requirement.
- R27 series based on R03 series feature high density and miniaturization.

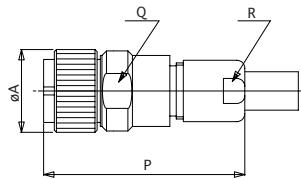
Specifications

Series	R05	R27
Connections	Screw Coupling	
Termination	Solder	
Temperature and Humidity	-25°C to +85°C 85% Max.	
Number of Pins	2, 3, 5, 6, 8, 12	8, 12
Shell Material / Finish	Brass and Zinc Alloy / Nickel	
Contact Material / Finish	Copper Alloy / Gold over Nickel	
Corrosion Resistance	Salt Spray 5% 48H	

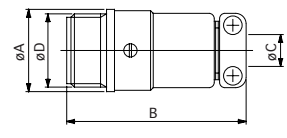
* See page 28 as for Electrical Specifications.



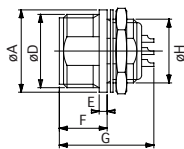
Plug / Normal Clamp Type



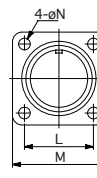
Plug / Screw Clamp Type



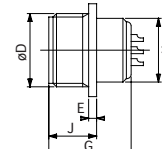
Jack / Normal Clamp Type



Bulkhead Mount Receptacle



Flange Mount Receptacle



Configuration

Series	Insert size	No. of Pins	Dimensions (mm)																
			A	B	C	D	E	F	G	H	J	K	L	M	N	P	Q	R	
R03	6	2, 3, 5	12.0	32.0	5.2	10.5 P=0.75	1.5	9.0	18.0	9.0 P=0.5	9.5	10.5	10.5	15.0	2.2	35.0	10.5	9.5	
	9	6, 8	15.5	34.0	6.2	M14 P=1	1.5	9.0	18.0	12.0 P=0.8	9.5	10.5	13.0	17.5	2.2	37.0	13.5	10.5	
	12	12	20.0	39.0	10.5	M18 P=1	1.5	9.0	18.0	M16 P=1	9.5	10.5	17.0	22.5	2.8	37.0	13.5	10.5	
R27	6	8	12.0	32.0	5.2	10.5 P=0.75	1.5	9.0	18.0	9.0 P=0.5	9.5	10.5	10.5	15.0	2.2	35.0	10.5	9.5	
	9	12	15.5	34.0	6.2	M14 P=1	1.5	9.0	18.0	12.0 P=0.8	9.5	10.5	13.0	17.5	2.2	37.0	13.5	10.5	

Bayonet Miniature Circular Connectors

R05 series / R29 series

- R05 series are small circular connectors with bayonet lock system. They are subminiature in size and are suited for a variety of electronic equipment.
- A wide variety of molded cable assemblies are available for your requirement.
- R29 series based on R05 series feature high density and miniaturization.

Specifications

Series	R05	R29
Connections	Bayonet Lock	
Termination	Solder	
Temperature and Humidity	-25°C to +85°C 85% Max.	
Number of Pins	2, 3, 5, 6, 8, 12	8, 12
Shell Material / Finish	Brass and Zinc Alloy / Nickel	
Contact Material / Finish	Copper Alloy / Gold over Nickel	
Corrosion Resistance	Salt Spray 5% 48h	

* See page 28 as for Electrical Specifications.



Plug / Normal Clamp Type
R05-PB5F



Jack / Normal Clamp Type
R05-JB5M



Flange Mount Receptacle
R05-RB5M



Bulkhead Mount Receptacle
R05-R5M



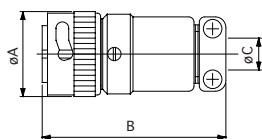
Plug / Screw Clamp Type
R05-P5F



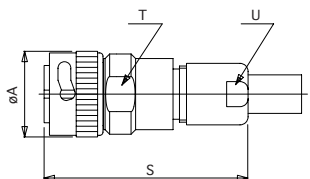
Jack / Screw Clamp Type
R05-J5M



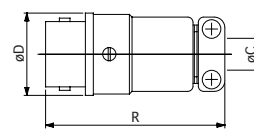
Bulkhead Mount Receptacle for Printed Circuit
R05-R5F2



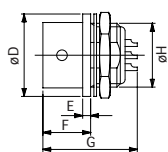
Plug / Normal Clamp Type



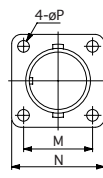
Plug / Screw Clamp Type



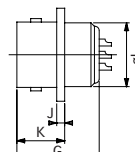
Jack / Normal Clamp Type



Bulkhead Mount Receptacle



Flange Mount Receptacle



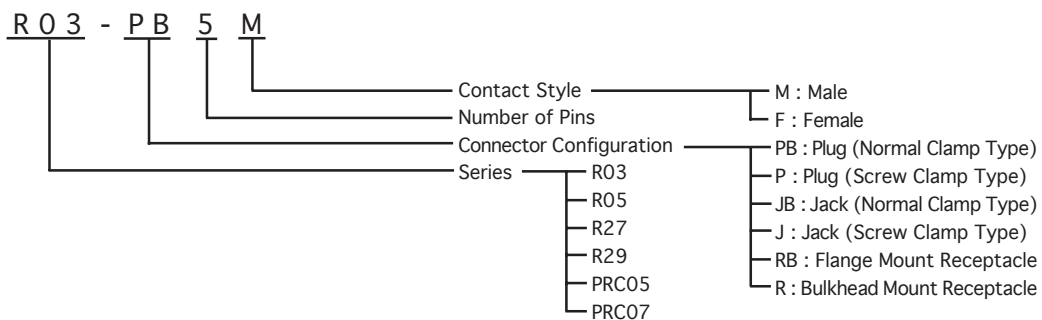
Configuration

Series	Insert size	No. of Pins	Dimensions (mm)																	
			A	B	C	D	E	F	G	H	J	K	L	M	N	P	R	S	T	U
R05	6	2, 3, 5	13.0	32.5	5.2	12.0	2.0	9.5	18.0	9.0 P=0.5	1.5	10.5	9.0	10.5	15.0	2.2	32.0	35.5	10.5	9.5
	9	6, 8	16.0	34.5	6.2	15.5	2.0	9.5	18.0	12.0 P=0.8	1.5	10.5	12.0	13.0	17.5	2.2	34.0	38.0	13.5	10.5
	12	12	20.0	39.0	10.5	19.5	1.5	9.0	18.0	M16 P=1	1.5	10.5	16.0	17.0	22.5	2.8	39.0	38.0	13.5	10.5
R29	6	8	13.0	32.5	5.2	12.0	2.0	9.5	18.0	9.0 P=0.5	1.5	10.5	9.0	10.5	15.0	2.2	32.0	35.5	10.5	9.5
	9	12	16.0	34.5	6.2	15.5	2.0	9.5	18.0	12.0 P=0.8	1.5	10.5	12.0	13.0	17.5	2.2	34.0	38.0	13.5	10.5

Miniature Circular Connectors Specifications

R03 series / R05 series / R27 series / R29 series / PRC05 series / PRC07 series

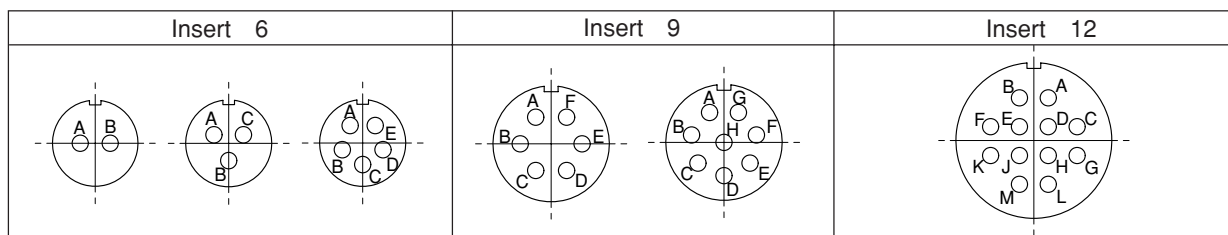
Part Numbering System



Electrical Specifications

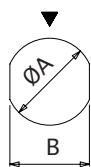
Series	R03, R05, PRC05						R27, R29, PRC07	
Insert Size	6			9		12	6	9
Number of Contacts	2	3	5	6	8	12	8	12
Withstanding Voltage (V RMS)	900	900	500	900	700	900	300	
Voltage Rating (V RMS)	300	300	150	300	200	300	100	
Current Rating (A)	2							
Applicable Wire Size	AWG#24 (0.2mm ² Max.)						AWG#26 (0.1mm ² Max.)	
Contact Resistance	8mΩ min.						10mΩ min.	
Insulation Resistance	DC500V 1000MΩ min.						DC100V 1000MΩ min.	

Insert Arrangement



* Drawings above are ones viewed from the rear side of pin insulators. (pin contacts)

Mounting Hole Dimensions

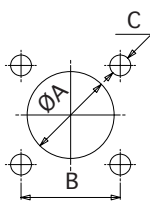


Style 1

Bulkhead Mount Receptacle

Insert Size	Style	φA	B
6	1	9.2	8.4
9		12.2	11.2
12		16.2	14.7

* R27, R29 and PRC07 are not available in insert size 12.



Style 2

Flange Mount Receptacle

Insert Size	Style	φA	B	C
6	2	9.2	10.5	φ2.2
9		12.2	13.0	φ2.2
12		16.2	17.0	φ2.2

* R27, R29 and PRC07 are not available in insert size 12.